



LIFE CHANGING STUDIES IN GREECE

WORLD-CLASS
UK DEGREES


MEDITERRANEAN
COLLEGE
Excellence In Education
Founded in 1977


UNIVERSITY OF
DERBY

MEDITERRANEAN COLLEGE

WHERE BRITISH EXCELLENCE MEETS GREEK LIFESTYLE

Mediterranean College, a proud partner of the University of Derby, offers international students the opportunity to earn a globally recognized British degree in the heart of Greece. Combining high-quality UK education with a vibrant Mediterranean lifestyle, our college provides

a supportive learning environment, modern facilities, and a rich student experience. From engaging lectures and practical workshops to cultural excursions and a lively campus life, studying at Mediterranean College means gaining world-class education while exploring one of the most beautiful and historic countries in the world.



UNIVERSITY OF DERBY

YOUR GATEWAY TO A GLOBAL CAREER



By studying at Mediterranean College, you earn a globally recognized University of Derby degree. With over 125 years of academic excellence in the UK, the University of Derby is renowned for its high-quality teaching, strong industry connections, and focus on practical, career-ready skills.

2ND

for employability and course quality
Uni Compare 2026

TOP 10

UK university
Uni Compare 2026

NO. 1

for Accommodation
Global Student Living Awards
2025, 2024, 2023, 2022

94%

of graduates in work/further study
Latest HESA Graduate Outcomes survey

TOP 25

in the UK for overall student satisfaction
Uni Compare 2026



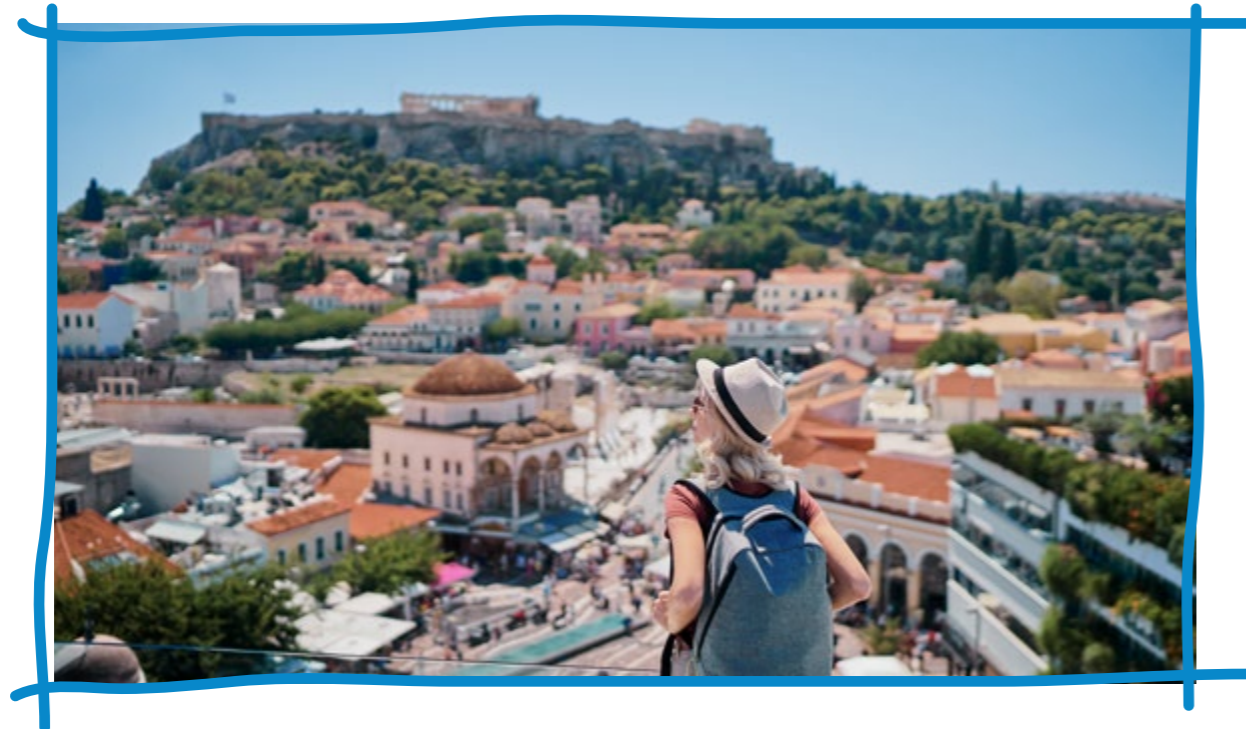
Awarded the highest rating in the UK Government's Teaching Excellence Framework, TEF Gold recognises University of Derby for delivering outstanding teaching, exceptional student support, and excellent graduate outcomes, placing it among the very best universities in the UK for teaching quality.



STUDY IN GREECE

Greece offers international students a unique combination of vibrant city life, rich history, and a welcoming culture. It is widely regarded as safe and student-friendly, with affordable living costs compared to many other European countries. From ancient landmarks and world-class museums to lively cafes, beaches, and cultural festivals,

Greece provides an inspiring environment for learning and personal growth. Its Mediterranean lifestyle, warm climate, and diverse opportunities for exploration make it an ideal place to live, study, and create unforgettable experiences.



SAFE, AFFORDABLE, AND FULL OF HISTORY AND CULTURE—THE PERFECT PLACE FOR YOUR INTERNATIONAL EXPERIENCE!



YOUR CAMPUS, YOUR CHOICE

South or North, Athens or Thessaloniki – Mediterranean College offers modern facilities across two vibrant cities. With two campuses and five teaching sites, you can choose the location that suits you best.

ATHENS CAMPUS

Where East meets West: a unique blend of ancient monuments, a modern skyline, multiculturalism, a majestic riviera, and nightlife second to none!



PATISSION SITE
(ATHENS DOWNTOWN)



GLYFADA
(ATHENIAN RIVIERA)



PELLIN'S SITE
(ATHENS DOWNTOWN)

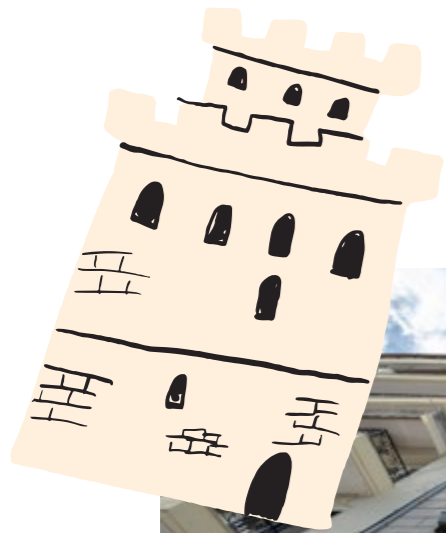


THESSALONIKI CAMPUS

Greece's second largest city, full of ancient and Byzantine monuments, exciting nightlife, nearby golden beaches and a melting pot of many cultures!

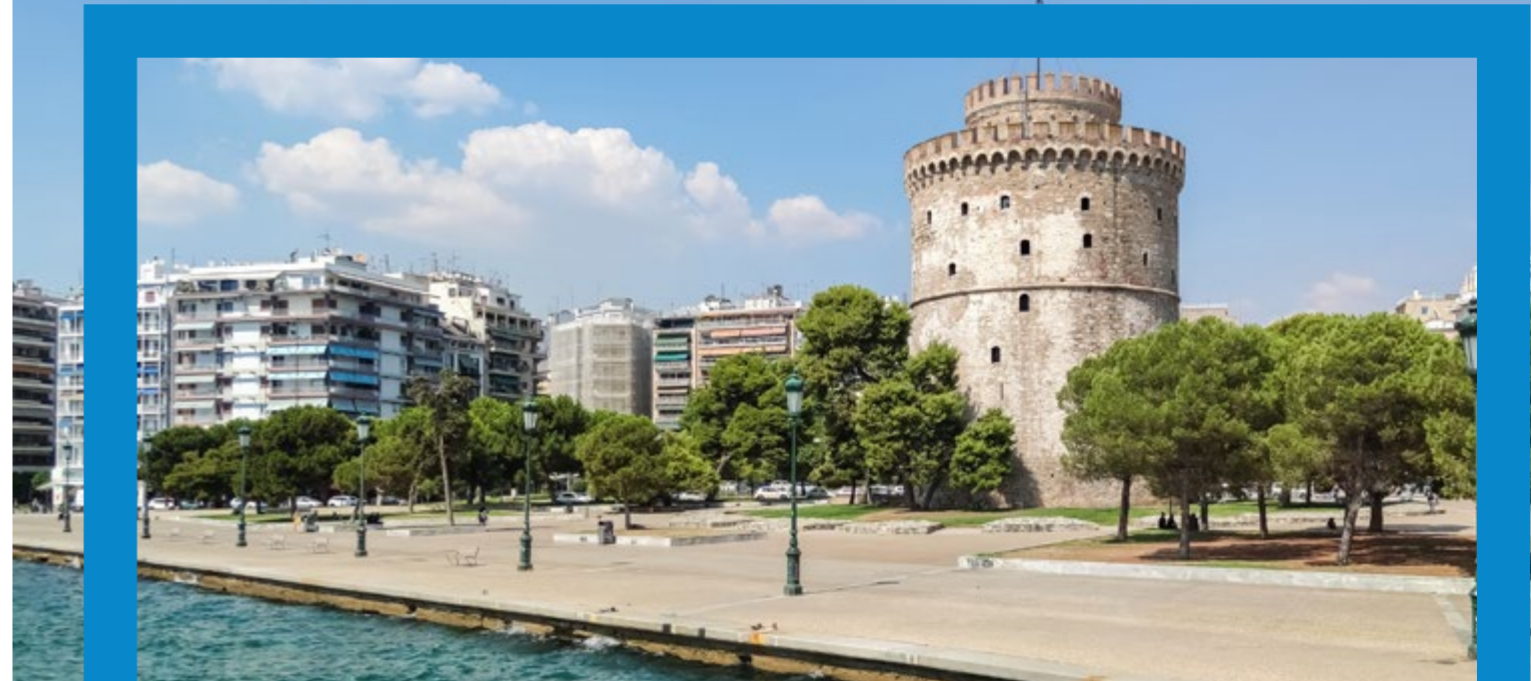
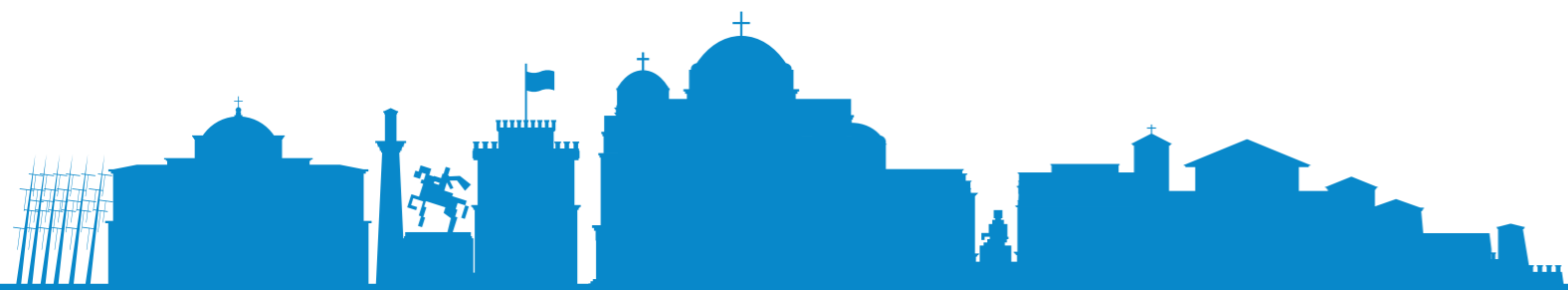


IONOS DRAGOMI 15
(THESSALONIKI DOWN TOWN)



IONOS DRAGOMI 21
(THESSALONIKI DOWN TOWN)

TAKE A VIRTUAL CAMPUS TOUR





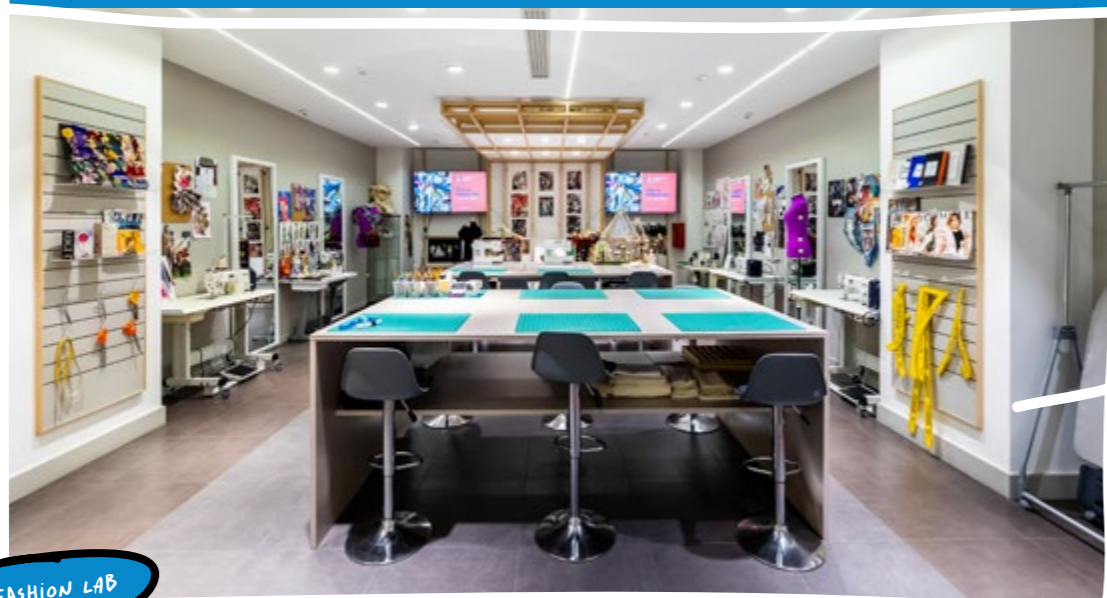
FACILITIES



LIBRARY



HIGH PERFORMANCE COMPUTING LAB



FASHION LAB



SPORT SCIENCE PRACTICAL ROOM & GYM

STUDY AT THE BIRTHPLACE OF PHILOSOPHY, THEATRE, DEMOCRACY!

A liberal arts course in Greek Language, History, Philosophy and Culture is offered to all international students over two academic years, leading to a Certificate of Completion.



ATHENS ACROPOLIS

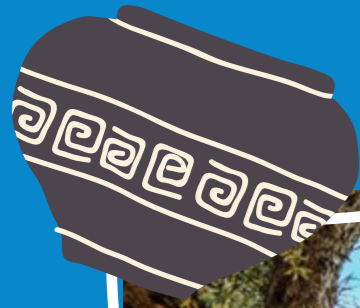


ANCIENT THEATRE OF EPIDAURUS



TEMPLE OF POSEIDON





SANCTUARY OF DELPHI



ANCIENT OLYMPIA



METEORA MONASTERIES



VERGINA ROYAL TOMBS

THE COURSE IS ENRICHED BY A WIDE RANGE OF EXCURSIONS TO GREECE'S MOST ICONIC HISTORICAL SITES, MUSEUMS AND CULTURAL LANDMARKS.



MAKING YOU FEEL AT HOME

INTERNATIONAL OFFICE

We're Here to Support You!
Our dedicated international team is ready to:

- Guide you in choosing your course and submitting your application
- Assist with your visa application
- Connect you with accommodation options and potential roommates
- Advice on residency permit paperwork
- Provide orientation and ongoing guidance
- Serve as your main point of contact throughout your studies



→ **Check the international testimonials**

INTERNATIONAL STUDENT CLUB

The Club brings together students from around the world in a welcoming and inclusive community. Through cultural events, social activities, trips and themed gatherings, you connect with new friends, share your culture and experience life in Greece beyond the classroom.



STUDENT ACCOMMODATION

Are you looking for individual or shared accommodation? We provide you with a range of affordable apartments and flats near the campuses! Private student accommodation offers fully furnished apartments with modern amenities, high-speed Wi-Fi, air conditioning, and shared or private facilities for a comfortable student living experience.



→ **International Students Podcast!**
Tune in and listen to the experiences of International Students at Mediterranean College and Greece!

AN ACTIVE STUDENT UNION AND A WIDE RANGE OF CLUBS AND SOCIETIES OFFER YOU A VIBRANT STUDENT LIFE, HELPING YOU DISCOVER NEW INTERESTS, BUILD LASTING FRIENDSHIPS AND ENJOY UNFORGETTABLE EXPERIENCES.

YOUR SUCCESS, OUR PRIORITY

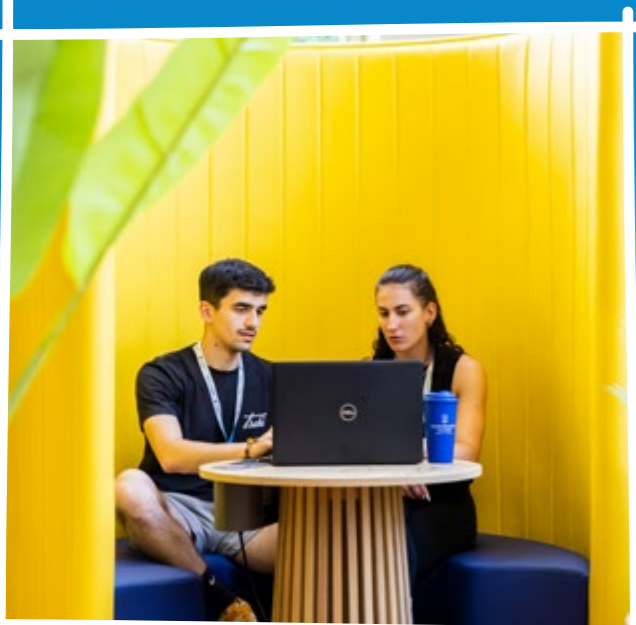
ORIENTATION & INDUCTION WEEK

Our Orientation and Induction Week helps you start your journey with confidence. You'll get to know your campus, meet your peers and faculty, and learn about the resources and support available to you. Through workshops, social activities, and guided introductions, you'll quickly feel at home, prepared, and ready to make the most of your studies and life in Greece.



CENTRE FOR ACADEMIC FOUNDATIONS & SKILLS

Our Centre for Academic Foundations & Skills helps you build the essential skills for success in higher education. From English language skills and foundation courses to academic writing and research techniques, the Centre provides bespoke programmes and personalised support to strengthen your confidence and performance.



CAREER OFFICE

You receive dedicated support to build your career from day one: career guidance, CV and LinkedIn support, interview coaching, and access to internships and job opportunities. You take part in career events, employer networking and practical workshops, gaining real-world experience and valuable connections.



COUNSELLING CENTRE

Our Counselling Centre is here to support your personal wellbeing and mental health. Our professional team offers confidential guidance, practical advice, and emotional support to help you manage stress, adapt to student life, and overcome challenges.

YOUR PROGRAMME LEADER AND PERSONAL
TUTOR WILL SUPPORT YOU ACADEMICALLY,
PERSONALLY, AND PROFESSIONALLY THROUGHOUT
YOUR STUDIES.

EXPLORE A BROAD RANGE OF UNDERGRADUATE COURSES

Undergraduate courses are taught in English, typically 3 years (5 for Engineering), with an October intake and some February options.

BUSINESS, ECONOMICS & ENTREPRENEURSHIP

- BA (Hons) Business Management
- BA (Hons) Business (Marketing)
- BA (Hons) Business (HRM)
- BA (Hons) Business (Shipping)
- BA (Hons) Business (Finance)
- BA (Hons) International Hospitality Management

PSYCHOLOGY, HEALTH & THERAPEUTIC PRACTICE

- BSc (Hons) Applied Psychology
- BSc (Hons) Physiotherapy

COMPUTING, ENGINEERING & CREATIVE INDUSTRIES

- BSc (Hons) Data Science & Artificial Intelligence
- BSc (Hons) Computer Science
- BSc (Hons) Cyber Security
- BSc (Hons) Computer Games Programming
- MEng/ BEng (Hons) Mechanical Engineering & Design
- MEng/ BEng (Hons) Civil Engineering & Construction
- MEng/ BEng (Hons) Marine Engineering
- BA (Hons) Fashion Design & Marketing

ARTS & EDUCATION

- BA (Hons) English Language & TESOL

LAW & GOVERNANCE

- BA (Hons) International Relations & Politics

FOUNDATION PROGRAMMES

- Our on-campus Foundation Programmes provide a pathway for international students to progress directly into the first year of a bachelor's degree.

START DATES:
SEPTEMBER, FEBRUARY,
JUNE

POSTGRADUATE COURSES

Our postgraduate courses are taught in English and typically last one year, except for those with a clinical placement, which run for 2 years or more. All courses, except Psychology, offer both October and February intake.

BUSINESS, ECONOMICS & ENTREPRENEURSHIP

- MBA Global
- MSc Marketing Management
- MSc Digital Marketing
- MSc Human Resource Management
- MSc Shipping & Maritime Management
- MSc Global Operations & Supply Chain Management
- MA Leading Tourism & Hospitality
- MA Luxury Hospitality Management
- MA Events Management

LAW & GOVERNANCE

- LLM (pathways: Corporate & Finance Law, Commercial Law, Maritime Law, Intellectual Property & Information Technology Law, International Protection of Human Rights & Fundamental Freedoms)
- MPH Public Health

COMPUTING, ENGINEERING & CREATIVE INDUSTRIES

- MSc Artificial Intelligence
- MSc Big Data Analytics
- MSc Cyber Security
- MSc Civil Engineering & Construction
- MSc Mechanical Engineering & Design
- MSc Marine Engineering
- MSc Renewable Energy Engineering
- MSc Sustainable Architecture & Healthy Buildings

PSYCHOLOGY, HEALTH & THERAPEUTIC PRACTICE

- MSc Integrative Counselling & Psychotherapy
- MSc Cognitive Behavioural Therapy (CBT)
- MSc Clinical Psychology & Counselling
- MSc Health Psychology & Counselling
- MSc Forensic Psychology & Psychotherapy
- MSc Addictions & Behavioural Change
- MSc Neuropsychology
- MSc Educational Psychology & Counselling
- MSc Business Psychology
- MSc Strength & Conditioning

ARTS & EDUCATION

- MA Teaching English to Speakers of Other Languages (TESOL)

APPLICATION

APPLICATION PROCESS & DEADLINES

Application Procedure 'Step-by-Step':

- Apply & Pay the Application Fee (50/100€)
- Receive & Accept your Offer
- Pay a Deposit & Receive your Registration Letter
- Apply for a Visa (for non-EU citizens)...

→ [READ MORE HERE](#)

VISA GUIDANCE

Student Visa:

If you are a non-EU citizen, you will need to apply for a Student Visa (National Visa – Type D) through your local Greek Embassy or Consulate in your home country. We strongly recommend contacting your nearest office for the latest guidance on requirements and processing times, and submitting your application at least 8–12 weeks before your planned arrival to ensure everything is in place for the start of your studies.

→ [READ MORE HERE](#)

→ YOU MAY FIND THIS HELPFUL

INTERNATIONAL STUDENTS' TUITION FEES

ACADEMIC YEAR 2026-27

Programmes	Annual tuition fees
International Foundation Programme	4,500€
3-year BA/ BSc, 4-year BEng, 5-year MEng Programmes	
Year 1	6,750€
Year 2	6,750€
Year 3	6,750€
Year 4	6,750€
Year 5	6,750€
1-year full-time MA/ MSc Programmes	8,350€
2-year full-time MA/ MSc Programmes	
Year 1	5,590€
Year 2	3,590€

INCLUDED: MEDITERRANEAN COLLEGE ANNUAL TUITION FEES & UK PARTNER UNIVERSITY ANNUAL ENROLMENT FEE.

Not included: Application fee (50€ UG / 100€ PG), graduation fee (130€), accommodation costs or any other fees/ expenses.

Other discounts:

- -10% for paying upfront the 2-year full time master's tuition fees
- -8% Advance payment discount
- -5% for paying the annual tuition fees in 2 instalments



 **medcollege.edu.gr**

ATHENS | THESSALONIKI

CONTACT

THE INTERNATIONAL ADMISSIONS OFFICE
FOR A CHAT, TODAY!

T: + 30 210 88 99 600

M: international@medcollege.edu.gr

